

St. Lukes Road

Maidenhead • Berkshire • SL6 7DP

Guide Price: £925,000



coopers
est 1986

St. Lukes Road

Maidenhead • Berkshire • SL6 7DP

A six bedroom, two bathroom detached home situated on the ever popular St. Luke's Road, within walking distance of the town centre and conveniently located close to local transport links and highly regarded schools. The ground floor offers a spacious entrance hallway, providing access to a 14ft reception room, 15ft dining room, 19ft kitchen/breakfast room, shower room, and an impressive 44ft triple garage. To the first floor is the 14ft main bedroom, 14ft second bedroom, 14ft third bedroom, 11ft fourth bedroom, 11ft fifth bedroom and family bathroom. The loft has been converted creating the 22ft sixth bedroom. Outside offers off street parking and a private rear garden, each with access to the garage.

Six bedroom house

Detached

Sought after location

Walking distance to Town Centre

Two reception rooms

19ft kitchen/breakfast room

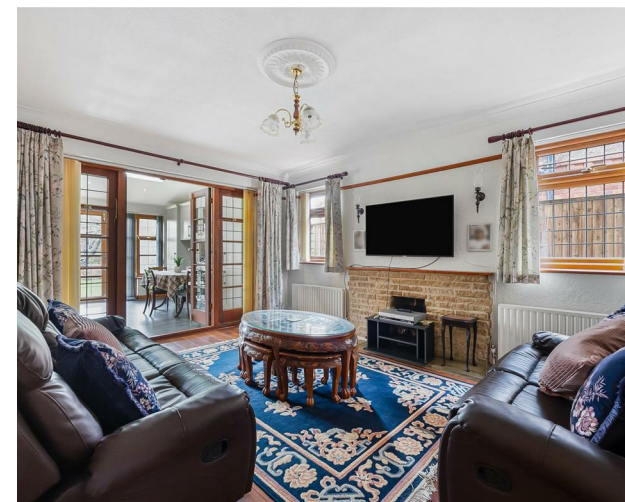
14ft main bedroom

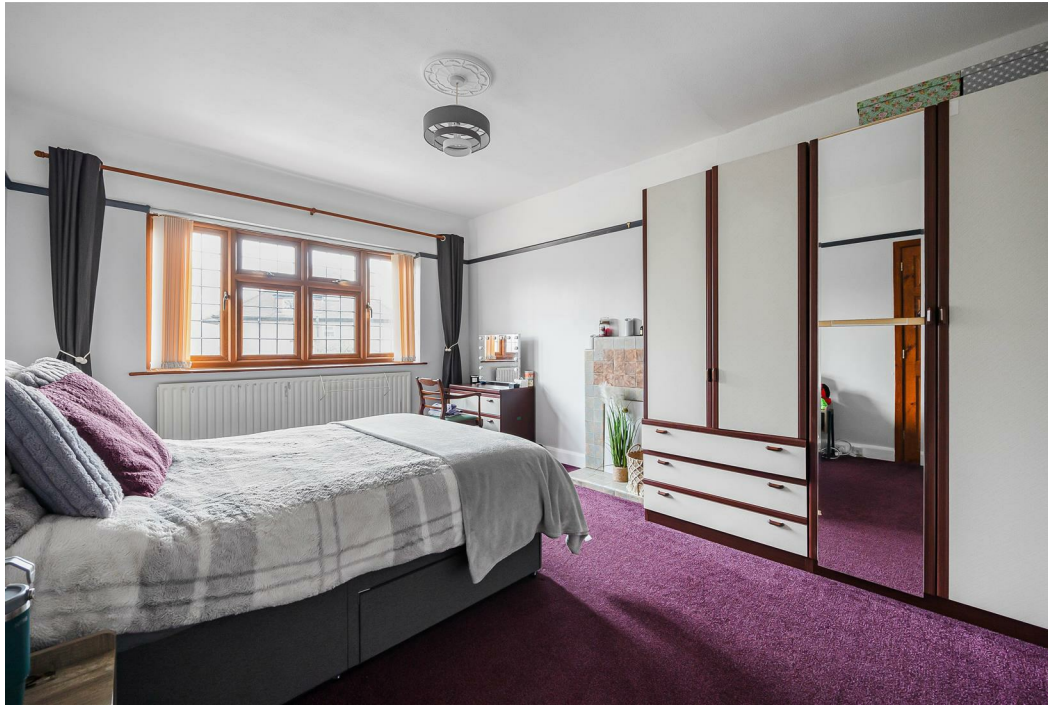
44ft triple garage

Private rear garden

Off street parking

These particulars are intended as a guide and must not be relied upon as statements of fact. Your attention is drawn to the Important Notice on the last page.





St. Lukes Road, Maidenhead, SL6

Approximate Area = 2597 sq ft / 241.2 sq m

For Identification only - Not to scale



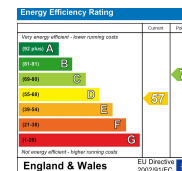
Floor plan produced in accordance with RICS Property Measurement 2nd Edition. Although Pink Plan Ltd ensures the highest level of accuracy, measurements of doors, windows and rooms are approximate and no responsibility is taken for error, omission or misstatement. These plans are for representation purposes only and no guarantee is given on the total square footage of the property within this plan. The figure icon is for initial guidance only and should not be relied on as a basis of valuation.



coopers
est 1986

**42 Queen Street, Maidenhead,
SL6 1HZ**
maidenhead@coopersresidential.co.uk

CoopersResidential.co.uk



Important Notice: These particulars, whilst believed to be accurate are set out as a general outline only for guidance and do not constitute any part of an offer or contract. Intending purchasers should not rely on them as statements or representation of fact, but must satisfy themselves by inspection or otherwise has the authority to make or give any representation or warranty in respect of the property.